

ORGANISATION - LOGISTICS

>> Pitbox allocation will be uploaded to our GEDLICH Racing mobile app <<

FOR DRIVERS

LIABILITY WAIVER

Sign the liability waiver if you participate in the tests on Thursday and Friday (**OBLIGATORY**)

LIABILITY WAIVER
SIGN ONLINE

FOR TEAMS

Paddock SPACE

For **GT4WS** teams - Fill out this form to request paddock space **or** if you are a PTWS, GTWS/ FWS team and need additional paddock space.

Paddock SPACE
ORDER FORM

CATERING

Catering and hospitality provided by MicFood in the Paddock, offering lunch and dinner. Fill out the catering order form to request catering.

CATERING ORDER FORM
BY MICFOOD

HOTEL SPECIALS

For special, personalized deals at hotels around the circuits, contact bastien@revolugo.com. For other hotel specials, click the button.

HOTEL SPECIALS
BY REVOLUGO

TRUCK PARKING

Request a parking spot for your truck before or after events. Most circuits offer secure parking for your truck(s) and cars. Fill out the form.

TRUCK PARKING
CIRCUITS / LOCATIONS

PHYSIOTHERAPIST

TIP!

A sports physiotherapist will be on site:
physiotherapy.sch@icloud.com
+49 174 170 911 2

PHYSIOTHERAPIST
BOOK NOW

SPORTING INFO / DOCUMENTS



GENERAL

GENERAL DOCUMENTS
GT4 WINTER SERIES

DRIVER NOMINATION
TO BE HANDED IN UNTIL BRIEFING

LIVESTREAM
CLICK HERE TO GO TO CHANNEL

PHOTO GALLERY
CLICK HERE TO GO TO GALLERY

EVENT SPECIFIC

IMPORTANT DOCUMENTS
WINTER SERIES MOTORLAND

GT4 BOP
CLICK HERE FOR GT4 SPECIFICATIONS

TIMEKEEPING
TAP HERE FOR LIVETIMING

TIMING RESULTS
TAP HERE FOR TIMING RESULTS

ORDER FORMS

MANDATORY

PANTA RACING FUEL

MANDATORY FOR GT4 CARS

DATA LOGGER

MANDATORY

PIRELLI TYRES

PFC BRAKES

TIMING DATA STREAM

TIME TABLE

WED 28 FEB: SET UP

START	END	DURATION	SESSION	INT
09:00	18:00	09:00	GT4 Winter Series Paddock access	
09:00	18:00	09:00	Prototype Winter Series Paddock access	
09:00	18:00	09:00	Formula Winter Series Pitbox access	
09:00	18:00	09:00	GT Winter Series Pitbox access	

THU 29 FEB: TEST DAY 1

START	END	DURATION	SESSION	INT
09:00	09:55	00:55	GT4 Winter Series Private Practice	00:05
10:00	10:50	00:50	Formula Winter Series Collective Test	00:05
10:55	11:50	00:55	Prototype Winter Series Private Practice	00:05
11:55	12:55	01:00	GT Winter Series Private Practice	00:00
12:55	13:55	01:00	Lunch Break	00:00
13:55	14:45	00:50	Formula Winter Series Collective Test	00:05
14:50	15:50	01:00	GT4 Winter Series Private Practice	00:05
15:55	16:55	01:00	Prototype Winter Series Private Practice	00:05
17:00	18:00	01:00	GT Winter Series Private Practice	

THU 29 FEB: TEAM MANAGER BRIEFING

16:00	16:30	00:30	Formula Winter Series	00:15
-------	-------	-------	-----------------------	-------

TIME TABLE

FRI 1 MAR: TECHNICAL SCRUTINEERING

MANDATORY

START	END	DURATION	SESSION	LOCATION
10:00	18:00	07:00	GT4 Winter Series	Technical Boxes
10:00	18:00	07:00	GT Winter Series	Technical Boxes
10:00	18:00	07:00	Prototype Winter Series	Technical Boxes
15:00	17:00	02:00	Eurocup 3	Technical Boxes
17:00	19:30	02:30	Formula Winter Series	Technical Boxes

DETAILED TIMESLOTS FOR GT- AND PROTOTYPE CARS WILL BE POSTED IN THE APP

FRI 1 MAR: TEAM MANAGER BRIEFING

START	END	DURATION	SESSION	INT
14:00	14:30	00:30	Prototype Winter Series	
13:00	13:30	00:30	GT4 Winter Series	
15:30	16:00	00:30	GT Winter Series	

MANDATORY

FRI 1 MAR: DRIVERS BRIEFINGS

START	END	DURATION	SESSION	INT
12:00	12:30	00:30	Formula Winter Series	00:15
16:00	16:30	00:30	Prototype Winter Series	
17:00	17:30	00:30	GT4 Winter Series	00:15
18:45	19:15	00:30	GT Winter Series	

TIME TABLE

FRI 1 MAR: ACCREDITATION + DOCS

MANDATORY

START	END	DURATION	SESSION	LOCATION
09:00	17:30	08:30	Formula Winter Series	GR Office Control Tower
09:00	17:30	08:30	GT Winter Series	GR Office Control Tower
09:00	17:30	08:30	GT4 Winter Series	GR Office Control Tower
09:00	17:30	08:30	Prototype Winter Series	GR Office Control Tower

FRI 1 MAR: TEST DAY 2

START	END	DURATION	SESSION	INT
09:00	09:50	00:50	Formula Winter Series Collective Test	00:05
09:55	10:40	00:45	GT4 Winter Series Private Practice	00:05
10:45	11:35	00:50	Formula Winter Series Collective Test	00:05
11:40	12:20	00:40	GT4 Winter Series Private Practice	00:00
12:20	13:20	01:00	Lunch Break	00:00
13:20	14:10	00:50	Formula Winter Series Collective Test	00:05
14:15	15:10	00:55	GT Winter Series Private Practice	00:05
15:15	15:55	00:40	GT4 Winter Series Private Practice	00:05
16:00	16:50	00:50	Formula Winter Series Collective Test	00:05
16:55	17:55	01:00	GT Winter Series Private Practice	00:05
18:00	20:00	02:00	Prototype Winter Series Private Practice	

SAT 2 MAR: DRIVERS BRIEFING

MANDATORY

08:00	08:30	00:30	Eurocup 3
-------	-------	-------	-----------

TIME TABLE

SAT 2 MAR: RACE DAY 1

START	END	DURATION	SESSION	INT
09:00	09:30	00:30	Eurocup 3 Free Practice 1	00:10
09:40	10:00	00:20	GT4 Winter Series Free Practice	00:10
10:10	10:30	00:20	Formula Winter Series Qualifying 1	00:10
10:40	11:00	00:20	Formula Winter Series Qualifying 2	00:10
11:10	11:30	00:20	GT Winter Series Free Practice	00:10
11:40	12:00	00:20	Prototype Winter Series Free Practice	00:10
12:10	12:40	00:30	Eurocup 3 Free Practice 2	00:10
12:50	13:05	00:15	GT4 Winter Series Qualifying 1	00:05
13:10	13:25	00:15	GT4 Winter Series Qualifying 2	00:10
13:35	13:50	00:15	GT Winter Series Qualifying 1	00:05
13:55	14:10	00:15	GT Winter Series Qualifying 2	00:10
14:20	14:35	00:15	Prototype Winter Series Qualifying 1	00:05
14:40	14:55	00:15	Prototype Winter Series Qualifying 2	00:10
15:05	15:20	00:15	Eurocup 3 Qualifying 1	00:10
15:30	15:45	00:15	Eurocup 3 Qualifying 2	00:10
15:55	16:10	00:15	Formula Winter Series Grid Procedure	00:00
16:10	16:45	00:30 + 1 Lap	Formula Winter Series Race 1	00:10
16:55	17:10	00:15	GT4 Winter Series Grid Procedure	00:00
17:10	17:40	00:30	GT4 Winter Series Race 1	00:10
17:50	18:05	00:15	GT Winter Series Grid Procedure	00:00
18:05	18:35	00:30	GT Winter Series Race 1	00:10
18:45	19:00	00:15	Prototype Winter Series Grid Procedure	00:00
19:00	20:00	00:50 + 1 Lap	Prototype Winter Series Race 1	

TIME TABLE

SUN 3 MAR: RACE DAY 2

START	END	DURATION	SESSION	INT
08:45	09:00	00:15	Eurocup 3 Grid Procedure	00:00
09:00	09:35	00:30 + 1 Lap	Eurocup 3 Race 1	00:10
09:45	10:00	00:15	Formula Winter Series Grid Procedure	00:00
10:00	10:35	00:30 + 1 Lap	Formula Winter Series Race 2	00:10
10:45	11:00	00:15	GT4 Winter Series Grid Procedure	00:00
11:00	11:30	00:30	GT4 Winter Series Race 2	00:10
11:40	11:55	00:15	GT Winter Series Grid Procedure	00:00
11:55	12:25	00:30	GT Winter Series Race 2	00:10
12:35	12:50	00:15	Prototype Winter Series Grid Procedure	00:00
12:50	13:45	00:50 + 1 Lap	Prototype Winter Series Race 2	00:10
13:55	14:10	00:15	Eurocup 3 Grid Procedure	00:00
14:10	14:45	00:30 + 1 Lap	Eurocup 3 Race 2	00:10
14:55	15:10	00:15	Formula Winter Series Grid Procedure	00:00
15:10	15:45	00:30 + 1 Lap	Formula Winter Series Race 3	00:10
15:55	16:10	00:15	GT4 Winter Series Grid Procedure	00:00
16:10	17:10	01:00	GT4 Winter Series Race 3	00:10
17:20	17:35	00:15	GT Winter Series Grid Procedure	00:00
17:35	18:30	00:55	GT Winter Series Race 3	

Pit boxes and Paddock clean and empty.

Do not leave tyres or barrels in the boxes or the paddock. Disposal costs will be invoiced.

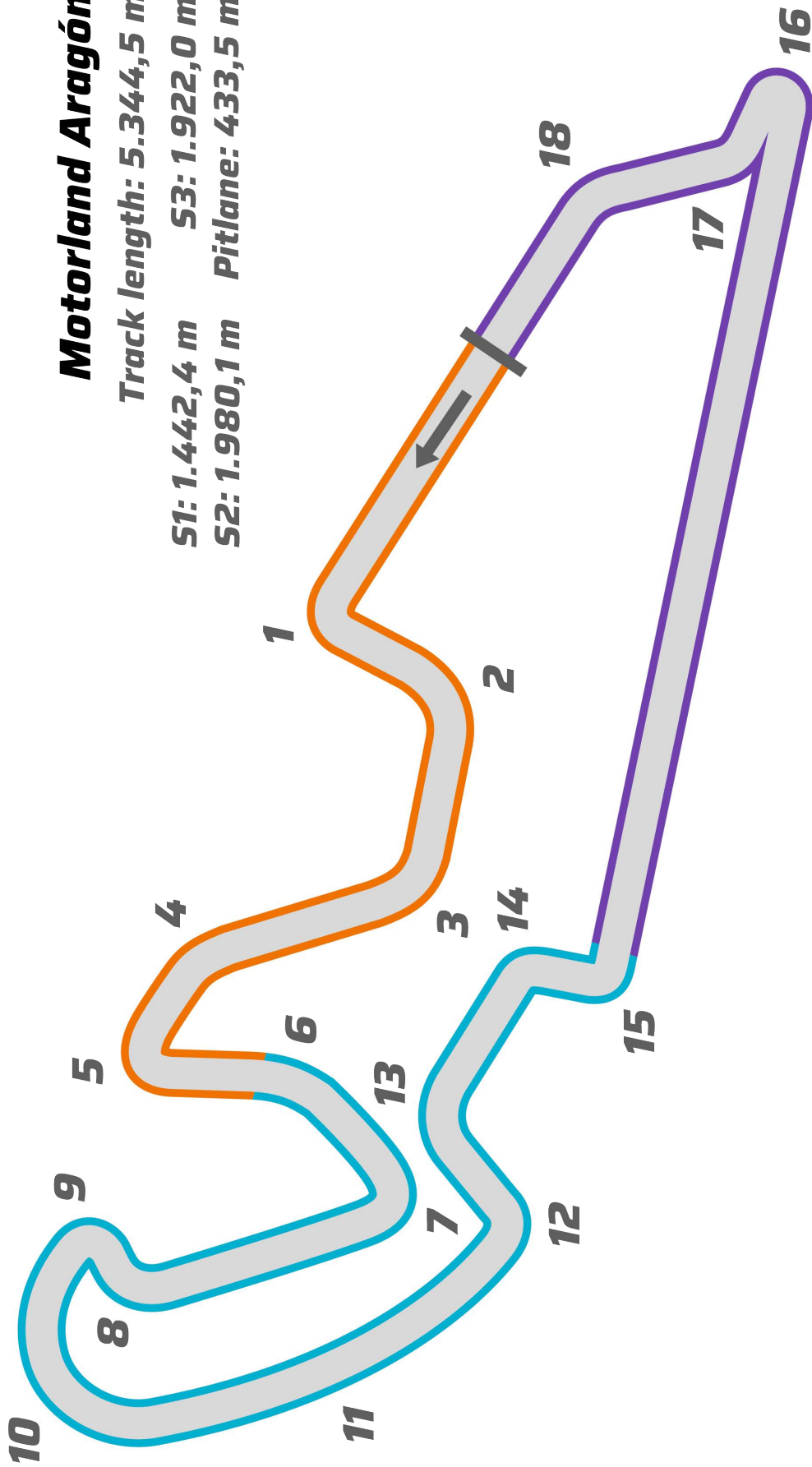
TRACK LAYOUT

Motorland Aragón

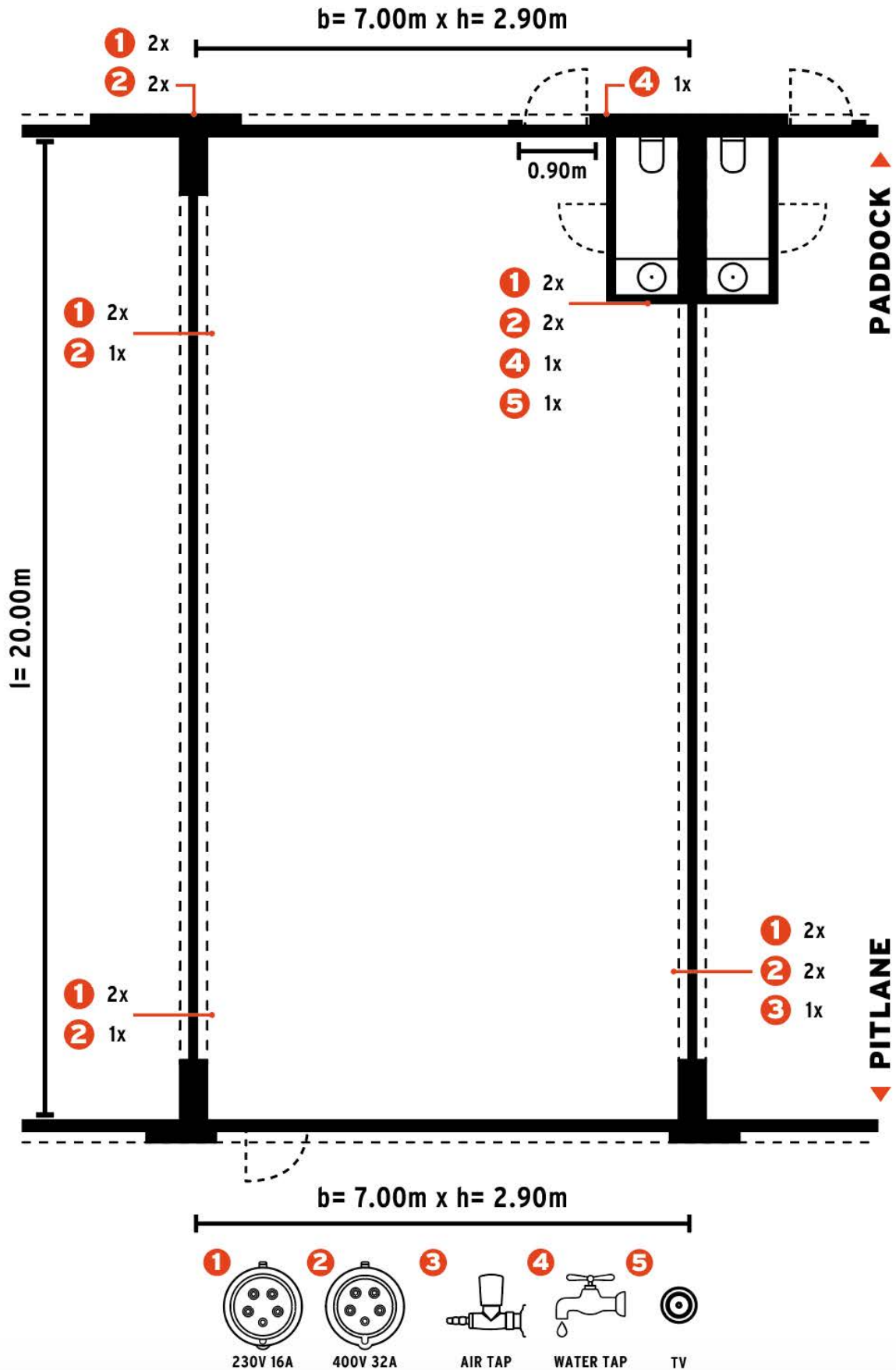
Track length: 5.344,5 m

S1: 1.442,4 m S3: 1.922,0 m

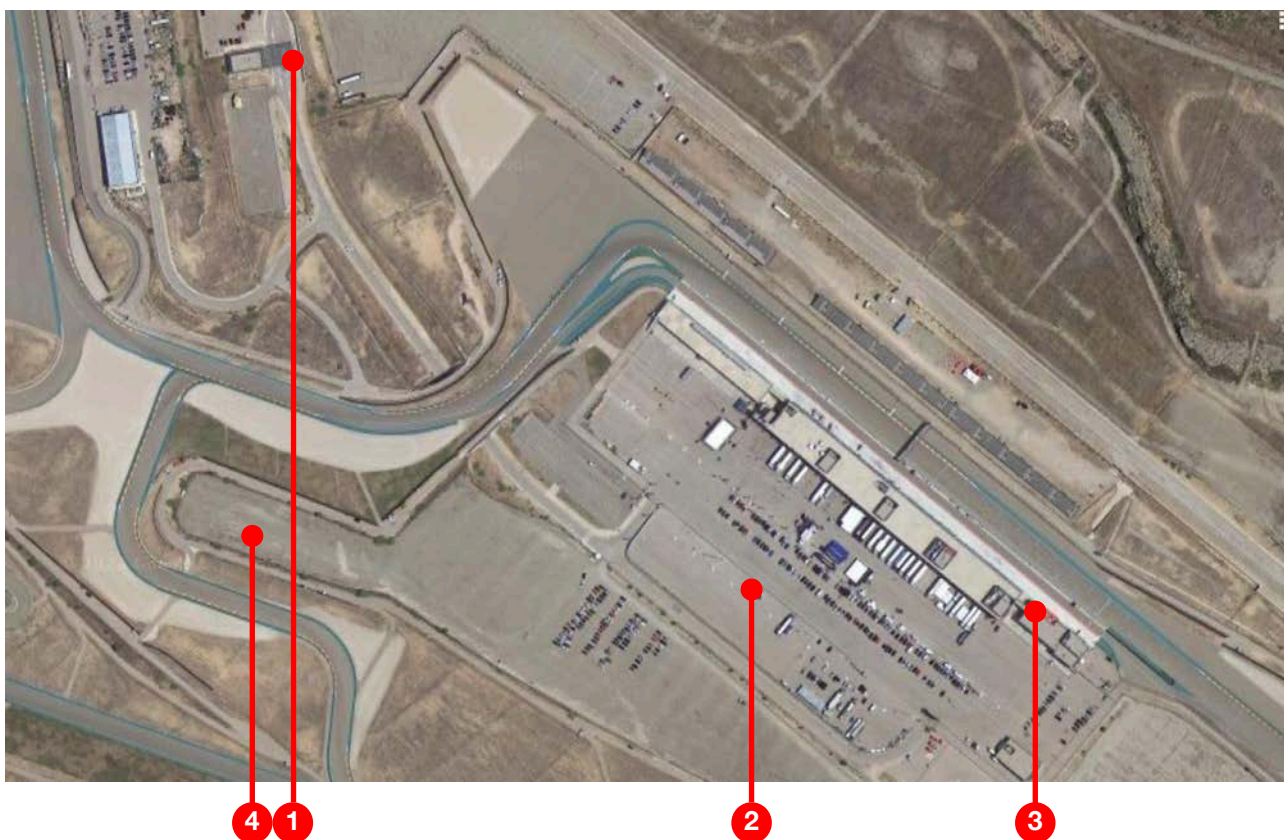
S2: 1.980,1 m Pitlane: 433,5 m



PIT BOX



FACILITY MAP



Paddock Map Legend

SUBJECT	LOCATION	HOW TO ACCESS
1 Paddock Entrance	-	THROUGH ENTRANCE GATE
2 TEAM PARKING	BEHIND THE PADDOCK - NOT INSIDE PADDOCK	TEAM PARKING „MIRROR CARD“
3 EVENT ORGANISATION OFFICE (ACCREDITATION)	GROUND FLOOR OF THE GENERAL INFO BUILDING	ENTER BUILDING AND KEEP RIGHT
3 BRIEFING ROOM RACE CONTROL STEWARDS OFFICE	1st - 2nd FLOOR IN CONTROL TOWER	ENTER BUILDING AND KEEP RIGHT
4 TRUCK PARKING	BEHIND PARKING INSIDE CIRCUIT'S PREMISES	FILL OUT TRUCK PARKING FORM

RELEVANT CONTACT PERSONS

Stefan Lehner
Organisation

Phone: +49 173 525 26 21
Mail: stefan@winter-series.com



Robin Selbach
Sales & Consulting

Phone: +49 172 72 20 111
Mail: robin@winter-series.com

Werner Aichinger
Race Director

Phone: +49 172 7111136
Mail: info@formel-koenig.de



Mário Manso
Chief Steward

Phone: +351 912 235 482
Mail: mariomanso.cda@gmail.com

Diogo Ferrão
Sporting Director

Phone: +351 917 515 665
Mail: diogo.ferrao@raceready.pt

